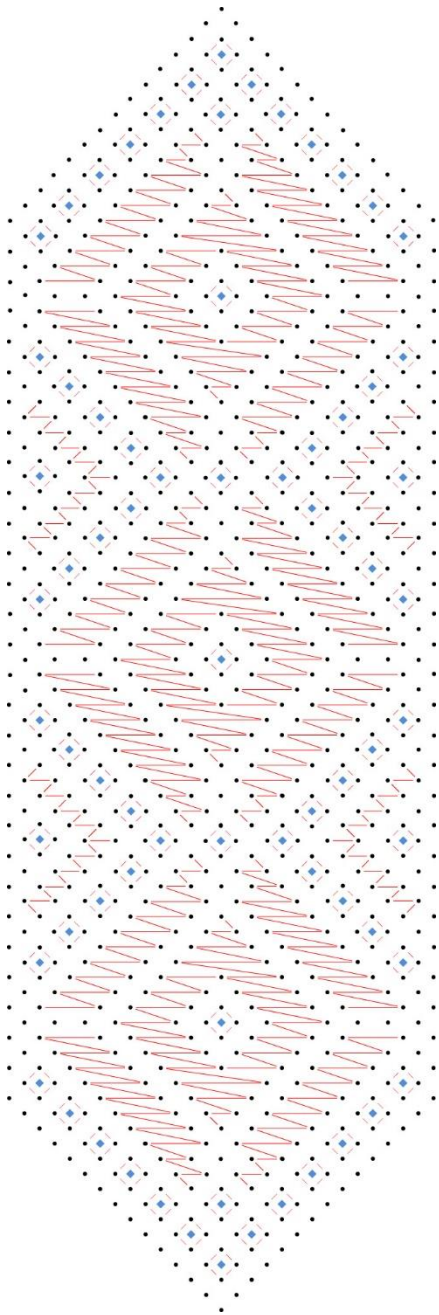
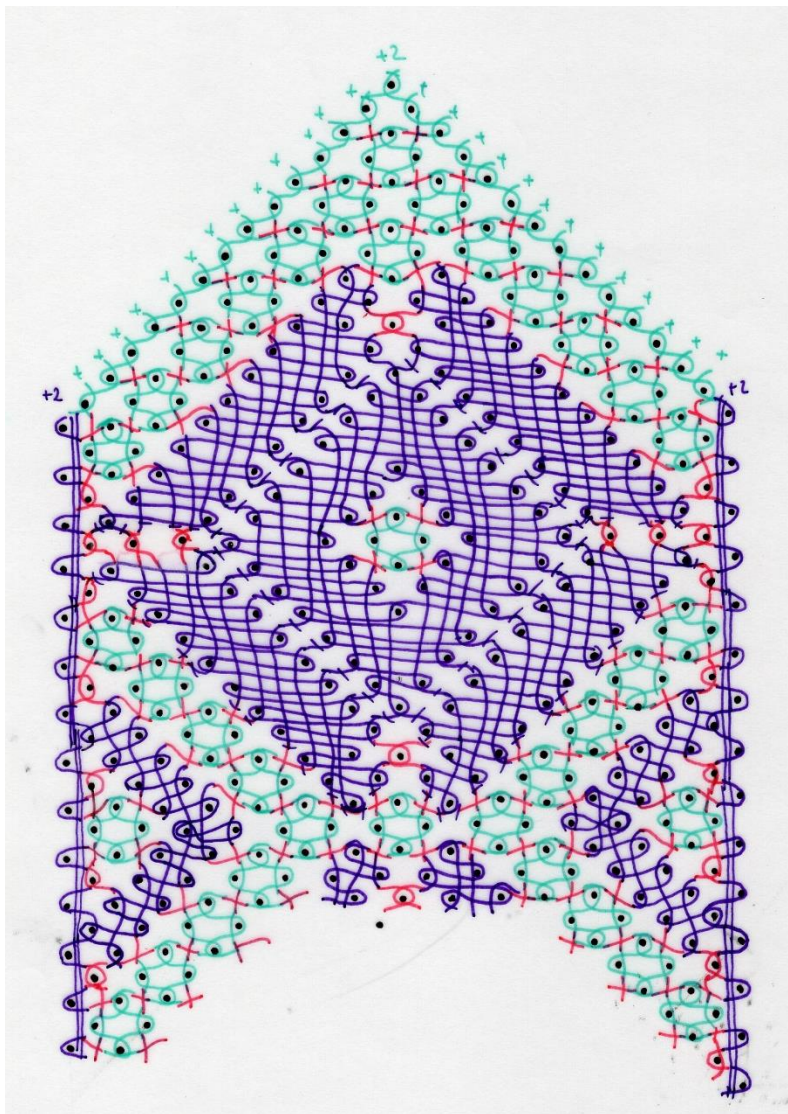


Pattern page



Marilyn saw this mosaic in a newspaper and wondered if it could inspire a piece of lace!



The pattern needs 32 pairs of Aurifil 28.

There is one change in the working diagram above from the lace that has been worked. In the lace the small trail is worked in half stitch, this doesn't show up against the roseground so I would recommend working it in cloth stitch instead.

On the small trail one pin is used twice, on narrow trails the difference in the number of pairs in the trail would show hence using the pin twice, remember to tension well afterwards.

Susan